

High-Speed Clinical Microcentrifuge 24*1.5-2.2ml Or PCR 8 Strip Tubes For Laboratory And Research

Our Product Introduction

for more products please visit us on mkecentrifuge.com

Basic Information

- Place of Origin: CHINA
- Brand Name: MKE
- Certification: CE,ISO13485,ISO9001,SFDA
- Model Number: HK-16C
- Minimum Order Quantity: 1
- Price: Negotiable
- Packaging Details: Wooden Box
- Delivery Time: 7-15 work days
- Payment Terms: L/C,D/A,D/P,T/T,Western Union,MoneyGram
- Supply Ability: 100 set/month

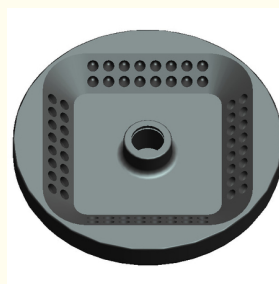


Product Specification

- Product Name: High-Speed Clinical Microcentrifuge 24*1.5-2.2ml Or PCR 8 Strip Tubes
- Applications: Microbiological Research, Protein Biochemistry, And Clinical Chemistry
- Max. Speed: 16500rpm
- Max. RCF: 19480xg
- Max. Capacity: 12x5ml
- Matched Rotors: Fixed Angle Rotors And PCR Stripe Rotor
- Display: LED
- Warranty: 1 Year Warranty For The Whole Machine, 3 Years Warranty For The Compressor And 5 Years Warranty For The Motor. Free Replacement Parts And Shipping Within Warranty.
- Highlight: **High-Speed Clinical Microcentrifuge, Laboratory High Speed Centrifuge, PCR 8 strip Tubes Microcentrifuge**



More Images



Product Description

Product Description:







Technical Specifications:

Speed range(rpm)	0-16500rpm adjustable	Time range	1-99minutes 59s adjustable
Max Capacity(ml)	12*5ml	Speed accuracy	±10r/min
RCF range (xg)	0-19480xg adjustable	Dimension(mm)	340*260*220mm
Noise(dBA)	≤55dB(A)	Net weight(without rotor)	15KGS
ACC/DEC	1-10 rates	Power supply	AC220V,50HZ,10A, 370W
Max. acceleration time [s]	15 seconds	Max. braking time [s]	15 seconds

The HK-16C microcentrifuge combines high performance, safety, and versatility, making it an excellent choice for microbiology, biochemistry, and clinical labs. Compatible with PCR strips, 2ml–5ml microtubes, and filter tubes, it supports a wide range of applications such as pelleting and sample purification.

Diverse Choice of Rotors:

No.	Rotor	Max.Capacity	Max. speed	Max. RCF	Note
NO.1 	Angle rotor	12×1.5/2.2ml	16500r/min	19176xg	EP/PP tube
	Adapter	12×0.5/0.2ml			EP/PP tube
NO.2 	Angle rotor	12×5ml	16500r/min	19480xg	EP/PP tube
	Adapter	12×1.5ml			EP/PP tube
NO.3 	Angle rotor	8×8×0.2ml	13500r/min	16480xg	PCR 8 strip tubes
NO.4	Angle rotor	24×1.5/2.2ml			EP/PP tube

	Adapter	24×0.5/0.2ml	14000r/min	18407xg	EP/PP tube
--	---------	--------------	------------	---------	------------



Key Benefits:

Efficient Operation: Frequency conversion AC motor with microprocessor control.

Intuitive Design: LED display for speed, time, RCF, and error codes.

Optimized Results: 10 acceleration/braking ramps; accelerates to 16,500 rpm in 15 seconds.

Safety Measures: Automatic cap locking, electrical lid interlock, and secure door mechanisms.

Quiet Performance: Noise level under 55 dBA at maximum speed (Patent No. ZL201721835868.9).

WHY CHOOSE US

- **Direct from the Manufacturer:** Enjoy competitive pricing on all our products.
- **Certified Excellence:** Experience premium quality with our CE and ISO certified products.
- **Customization at Its Best:** Benefit from our robust OEM and ODM capabilities tailored to your specific needs.
- **Reliable Production and Delivery:** Trust us for guaranteed on-time production and delivery of your orders.
- **Comprehensive Support:** Rely on our comprehensive after-sales service, including complimentary product accessories.
- **Expertise You Can Trust:** We stand behind our 15 years of experience in R&D and production of medical centrifuge machines.



Our Factory Introduction

We have a standardized production workshop operated by a dedicated team that ensures quality in every laboratory centrifuge and lab equipment we produce. Our R&D division includes design engineers, technology specialists, qualified experts, and process control managers. Following a strict quality control system, our specialists oversee the entire production process, from design and R&D to testing, production, quality inspection, and packaging.

- Specialize in centrifuges.
- With decades of experience, we've exported to 80+ countries.
- Proven Reputation: SGS and Intertek inspected, underlining our reliability.
- Manufacturing Capabilities: 6 floors, 3000 sqm each, dedicated to manufacturing and quality control.

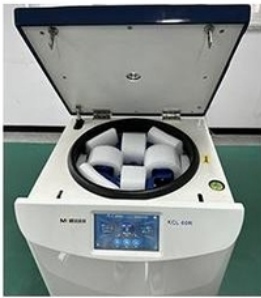


MKE Exhibition

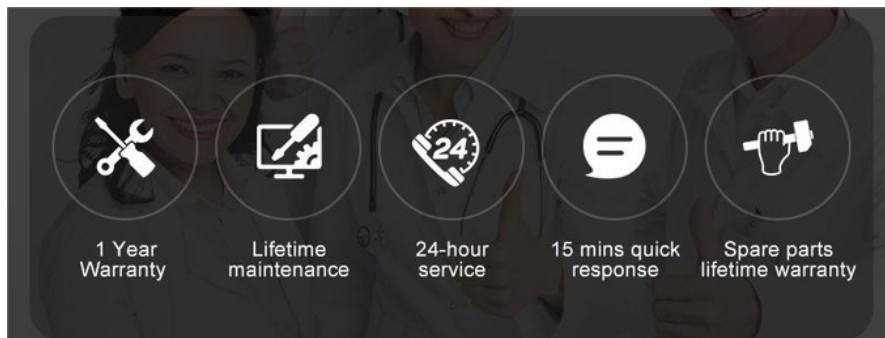


Packaging & Delivery

MKE centrifuges are securely packaged in wooden cases or carton boxes, selected according to the weight and size of the goods. This ensures they are delivered in excellent condition to customers worldwide.



After-Sale WARRANTY



FAQ

Q: How long is the production lead time?

A: Within 7-15 workdays after receiving deposit.

Q: What's your warranty?

A: All MKE products have ONE year warranty, five-year motor warranty. We won't charge clients any money for repairing the machine during one-year warranty time, the freight is also on us.

Q: How about the sample of MKE Centrifuge?

A: We could send you the samples but the freight and the sample are charged.

Q: Which kinds of Certificate would you have?

A: ISO9001, ISO13485, CE

Q: Do you offer centrifuges with voltage and plug options suitable for my country/region?

A: Yes, we provide centrifuges with various voltage and plug options to meet different country/region requirements. Please let us know your specific needs, and we will ensure compatibility.

Q: Are there customized options available for specific applications?

A: Absolutely! We offer customization options to meet specific application needs. Let us know your requirements, and we will tailor the centrifuge accordingly.



+86-17775883371



Shirley@mke-lab.com



mkecentrifuge.com

MKE Building, Sanhe Zhihui Industrial Park, Guyuan Road No. 426, Changsha High-tech Development Zone,
Hunan, China