

Table top Scientific Blood Centrifuges Machine 4000rpm For Veterinary Clinics

Our Product Introduction

for more products please visit us on mkecentrifuge.com

Basic Information

- Place of Origin: CHINA
- Brand Name: MKE
- Certification: CE,ISO13485,ISO9001,SFDA
- Model Number: TDZ4-WS
- Minimum Order Quantity: 1
- Price: Negotiable
- Packaging Details: Wooden Box
- Delivery Time: 7-15 work days
- Payment Terms: L/C,D/A,D/P,T/T,Western Union,MoneyGram
- Supply Ability: 100 set/month



Product Specification

- Applications: Hospitals,Veterinary Clinics,Food Labs,Universities & Colleges,Pharmaceutical Labs,Cell Culture Labs,Infant Stations
- MaxSpeed: 4000rpm
- MaxRCF: 2680xg
- MaxCapacity: 12*20ml Angle Rotor
- MatchedRotors: Fixed Angle Rotors
- Display: LCD
- ModelNumber: T4-M (old Model:TDZ4-WS)
- Warranty: 1 Year Warranty For The Whole Machine, 3 Years Warranty For The Compressor And 5 Years Warranty For The Motor. Free Replacement Parts And Shipping Within Warranty.
- Highlight: **Blood Bank scientific centrifuges, 4000rpm scientific centrifuges, 4000rpm blood bank centrifuge machine**



More Images



Product Description

The benchtop centrifuge TDZ4-WS is available with numerous fixed-angle rotors. The extensive range of accessories can accommodate tubes from 2 ml to 50 ml, separation of blood samples in clinical tests , hospital laboratories, beauty salons, dental hospitals, etc.

Design

- Metal housing, metal lid, and 304# stainless steel centrifuge chamber are autoclave-able and resistant detergents and disinfection liquids.
- Aluminum alloy rotor
- Observations window on lid for speed calibration and noise measurement.
- Microprocessor control with maintenance-free brushless DC motor
- LCD display the parameters of Speed, Timer, RCF.



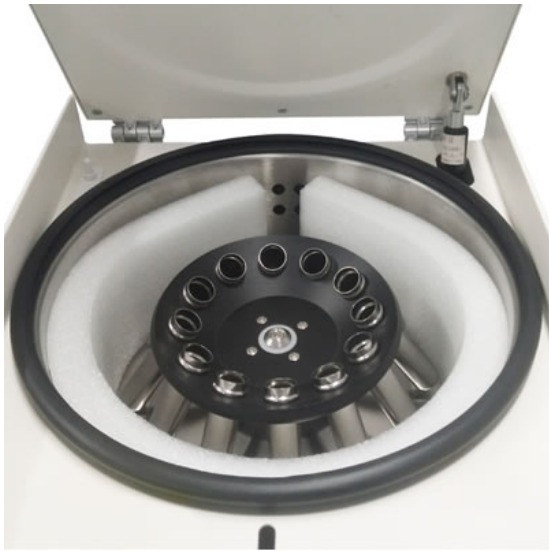
User friendly

- Automatic lid-locking and holding during rotor run
- Easily exchangeable rotors
- Automatic troubleshooting with indication of error code and alarm on the screen.
- "Mute"patent technology. Noise level lower than 55 decibel at the highest rotational speed.



Safety

- Produced according to international safety regulations (e.g. IEC 61010)
- Safety Electrical lid interlock, door can not open when rotor is running and machine won't run when lid open and error code appears.
- Emergency lid-lock release when power failure.
- Gas hinge for lid drop protection.
- Safety protections are made for the over speed, over heating(motor, chamber), imbalance etc to ensure the man machine safety.



WHY CHOOSE US

- **Direct from the Manufacturer:** Enjoy competitive pricing on all our products.
- **Certified Excellence:** Experience premium quality with our CE and ISO certified products.
- **Customization at Its Best:** Benefit from our robust OEM and ODM capabilities tailored to your specific needs.
- **Reliable Production and Delivery:** Trust us for guaranteed on-time production and delivery of your orders.
- **Comprehensive Support:** Rely on our comprehensive after-sales service, including complimentary product accessories.
- **Expertise You Can Trust:** We stand behind our 15 years of experience in R&D and production of medical centrifuge machines.



Our Factory Introduction

We have a standardized production workshop operated by a dedicated team that ensures quality in every laboratory centrifuge and lab equipment we produce. Our R&D division includes design engineers, technology specialists, qualified experts, and process control managers. Following a strict quality control system, our specialists oversee the entire production process, from design and R&D to testing, production, quality inspection, and packaging.

- Specialize in centrifuges.
- With decades of experience, we've exported to 80+ countries.
- Proven Reputation: SGS and Intertek inspected, underlining our reliability.
- Manufacturing Capabilities: 6 floors, 3000 sqm each, dedicated to manufacturing and quality control.



MKE Exhibition

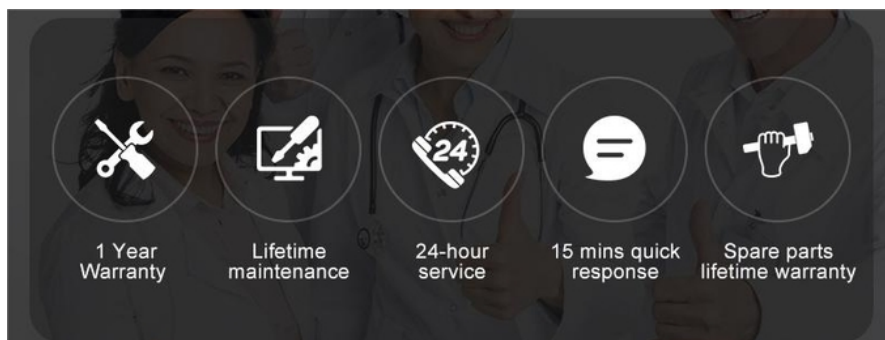


Packaging & Delivery

MKE centrifuges are securely packaged in wooden cases or carton boxes, selected according to the weight and size of the goods. This ensures they are delivered in excellent condition to customers worldwide.



After-Sale WARRANTY



FAQ

Q: How long is the production lead time?

A: Within 7-15 workdays after receiving deposit.

Q: What's your warranty?

A: All MKE products have ONE year warranty, five-year motor warranty. We won't charge clients any money for repairing the machine during one-year warranty time, the freight is also on us.

Q: How about the sample of MKE Centrifuge?

A: We could send you the samples but the freight and the sample are charged.

Q: Which kinds of Certificate would you have?

A: ISO9001, ISO13485, CE

Q: Do you offer centrifuges with voltage and plug options suitable for my country/region?

A: Yes, we provide centrifuges with various voltage and plug options to meet different country/region requirements. Please let us know your specific needs, and we will ensure compatibility.

Q: Are there customized options available for specific applications?

A: Absolutely! We offer customization options to meet specific application needs. Let us know your requirements, and we will tailor the centrifuge accordingly.



+86-17775883371



Shirley@mke-lab.com



mkecentrifuge.com

MKE Building, Sanhe Zhihui Industrial Park, Guyuan Road No. 426, Changsha High-tech Development Zone,
Hunan, China