

Pharmaceutical Blood Centrifuge Machine Refrigerated 6X1000MI Bag

Our Product Introduction

for more products please visit us on mkecentrifuge.com

Basic Information

- Place of Origin: CHINA
- Brand Name: MKE
- Certification: CE,ISO13485,ISO9001,SFDA
- Model Number: FR10(old model:GR-80C)
- Minimum Order Quantity: 1
- Price: Negotiable
- Packaging Details: Wooden Box
- Delivery Time: 7-15 work days
- Payment Terms: L/C,D/A,D/P,T/T,Western Union,MoneyGram
- Supply Ability: 100 set/month

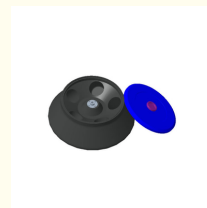
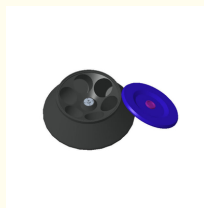
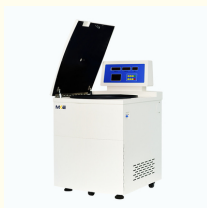
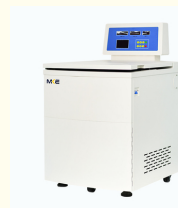


Product Specification

- Applications: Industrial Labs,Hospitals,Veterinary Clinics,Food Labs,Universities & Colleges,Pharmaceutical Labs,Cell Culture Labs
- Max.Speed: 8000rpm
- Max.RCF: 11880xg
- Max.Capacity: 6×1000ml
- Temperature Control Range: -20°C +40°C
- Matched Rotors: Fixed Angle Rotor
- Display: LCD
- Warranty: 1 Year Warranty For The Whole Machine, 3 Years Warranty For The Compressor And 5 Years Warranty For The Motor. Free Replacement Parts And Shipping Within Warranty.
- Highlight: 6X1000MI blood centrifuge machine, Pharmaceutical blood centrifuge machine,



More Images



Product Description

Floor standing refrigerated centrifuge FR10(old model:GR-80C) which can process the large capacity fixed rotor such as 6*1000ml and can also process the swing out rotor ,widely used in the the fields of blood stations, pharmaceutical factories, biochemistry, biological products, etc. It is the ideal instrument for blood separation, protein precipitation and cell collection and conforms to CE security certification, ISO9001 and 13485 quality certification.

Design

- Autoclave-able steel body and stainless steel chamber with super hard aluminum alloy rotor for good sealing and sterilization resistance.
- Microprocessor control, frequency conversion motor drive .
- Observations window on lid for speed calibration and noise measurement.
- Touch color large screen display the parameters of Speed, Timer, RCF, Rotors, Program(Memory), Acceleration& Deceleration information and Error code information.
- With wind cover shield, which covers the rotor and helps to prevent air currents from affecting the specimens being processed.

Our Product Introduction

- The rotor is made of super hard aluminium alloy by special technology, with good sealing performance and unlimited high temperature and high pressure sterilization resistance.
- The door cover and body are equipped with double-layer silicone seal ring.



User friendly

- CFC-free cooling system with high efficiency environmental protection refrigeration system and dual circuit control for precise temperature control
- Programmable and storable, stores up to 30 programs and provides direct user access with one keystroke save. The stored parameter: combination remains in the memory even after the centrifugation has been switched off.
- Provides the 10-speed acceleration and deceleration curves, to effectively avoid secondary sedimentation, with better centrifugation effect.
- Automatic lid-locking and holding during rotor run
- Easily exchangeable rotors, special rotor connector which makes it easy to load and unload rotor.
- Self-diagnostic system with high-strength chamber-coating and protective
- "Mute" patented technology, the highest speed operation is less than 58 decibels.
- Automatic rpm/rcf conversion
- Automatic rotor identification system, coded rotor identification prevents the rotor from over speeding.



Safety

- Produced according to international safety regulations (e.g. IEC 61010)
- Safety Electrical lid interlock, door can not open when rotor is running and machine won't run when lid open and error code appears.
- Automatic rotor locking function, no need to tighten the rotor head, automatic rotor identification system to prevent the wrong rotor on the run, effective protection of personnel safety and stability of the centrifuge.
- Emergency lid-lock release when power failure (very useful in an unexpected power interruption).
- Gas hinge for lid drop protection.
- Equipped with door cover protection, over speed, over current and advanced electronic unbalance detection system and other safety design, can be real-time monitoring of the centrifuge process to ensure the safe operation of the instrument.



WHY CHOOSE US

- **Direct from the Manufacturer:** Enjoy competitive pricing on all our products.
- **Certified Excellence:** Experience premium quality with our CE and ISO certified products.
- **Customization at Its Best:** Benefit from our robust OEM and ODM capabilities tailored to your specific needs.
- **Reliable Production and Delivery:** Trust us for guaranteed on-time production and delivery of your orders.
- **Comprehensive Support:** Rely on our comprehensive after-sales service, including complimentary product accessories.
- **Expertise You Can Trust:** We stand behind our 15 years of experience in R&D and production of medical centrifuge machines.



Our Factory Introduction

We have a standardized production workshop operated by a dedicated team that ensures quality in every laboratory centrifuge and lab equipment we produce. Our R&D division includes design engineers, technology specialists, qualified experts, and process control managers. Following a strict quality control system, our specialists oversee the entire production process, from design and R&D to testing, production, quality inspection, and packaging.

- Specialize in centrifuges.
- With decades of experience, we've exported to 80+ countries.
- Proven Reputation: SGS and Intertek inspected, underlining our reliability.
- Manufacturing Capabilities: 6 floors, 3000 sqm each, dedicated to manufacturing and quality control.

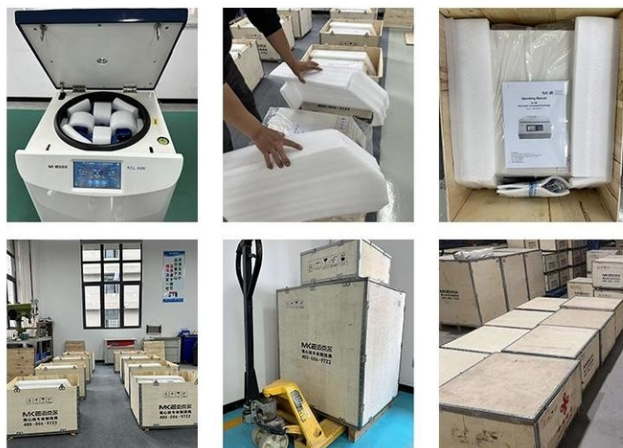


MKE Exhibition

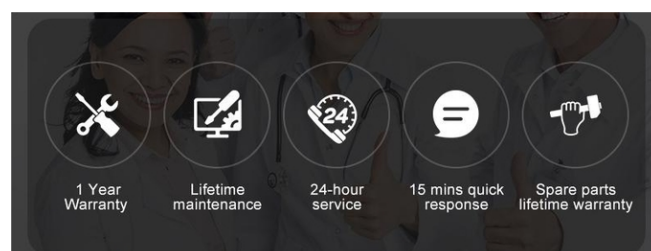


Packaging & Delivery

MKE centrifuges are securely packaged in wooden cases or carton boxes, selected according to the weight and size of the goods. This ensures they are delivered in excellent condition to customers worldwide.



After-Sale WARRANTY



FAQ

Q: How long is the production lead time?

A: Within 7-15 workdays after receiving deposit.

Q: What's your warranty?

A: All MKE products have ONE year warranty, five-year motor warranty. We won't charge clients any money for repairing the machine during one-year warranty time, the freight is also on us.

Q: How about the sample of MKE Centrifuge?

A: We could send you the samples but the freight and the sample are charged.

Q: Which kinds of Certificate would you have?

A: ISO9001, ISO13485, CE

Q: Do you offer centrifuges with voltage and plug options suitable for my country/region?

A: Yes, we provide centrifuges with various voltage and plug options to meet different country/region requirements. Please let us know your specific needs, and we will ensure compatibility.

Q: Are there customized options available for specific applications?

A: Absolutely! We offer customization options to meet specific application needs. Let us know your requirements, and we will tailor the centrifuge accordingly.



Professional
Centrifuge
Manufacturer

Hunan Michael Laboratory Instrument Co., Ltd.

+86-17775883371

Shirley@mke-lab.com

mkecentrifuge.com

MKE Building, Sanhe Zhihui Industrial Park, Guyuan Road No. 426, Changsha High-tech Development Zone, Hunan, China